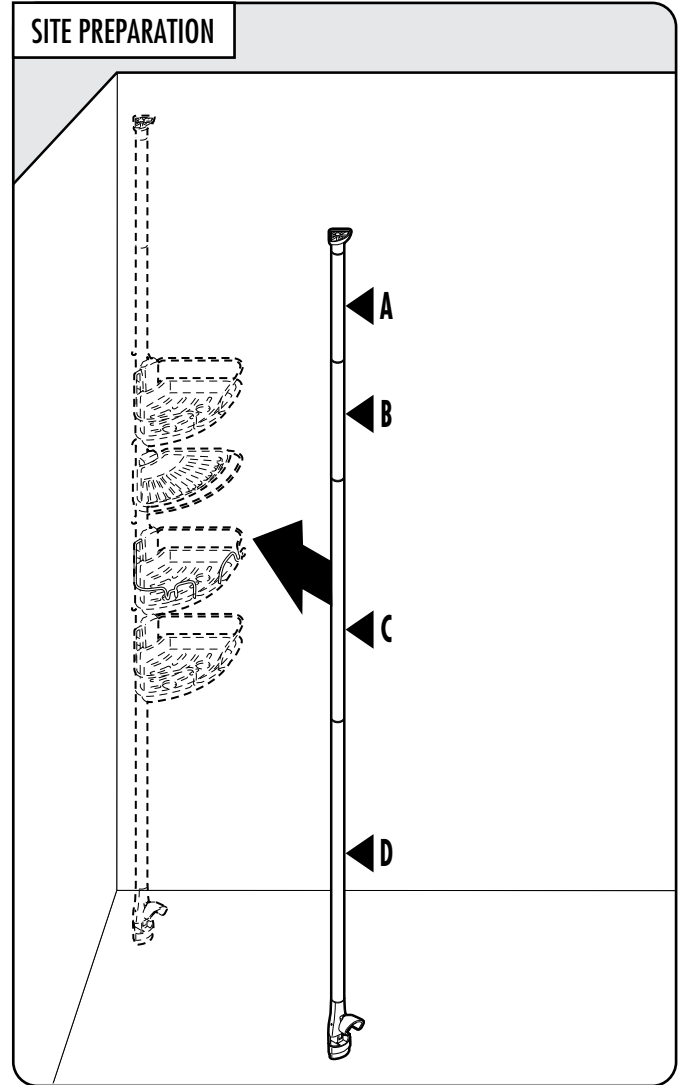
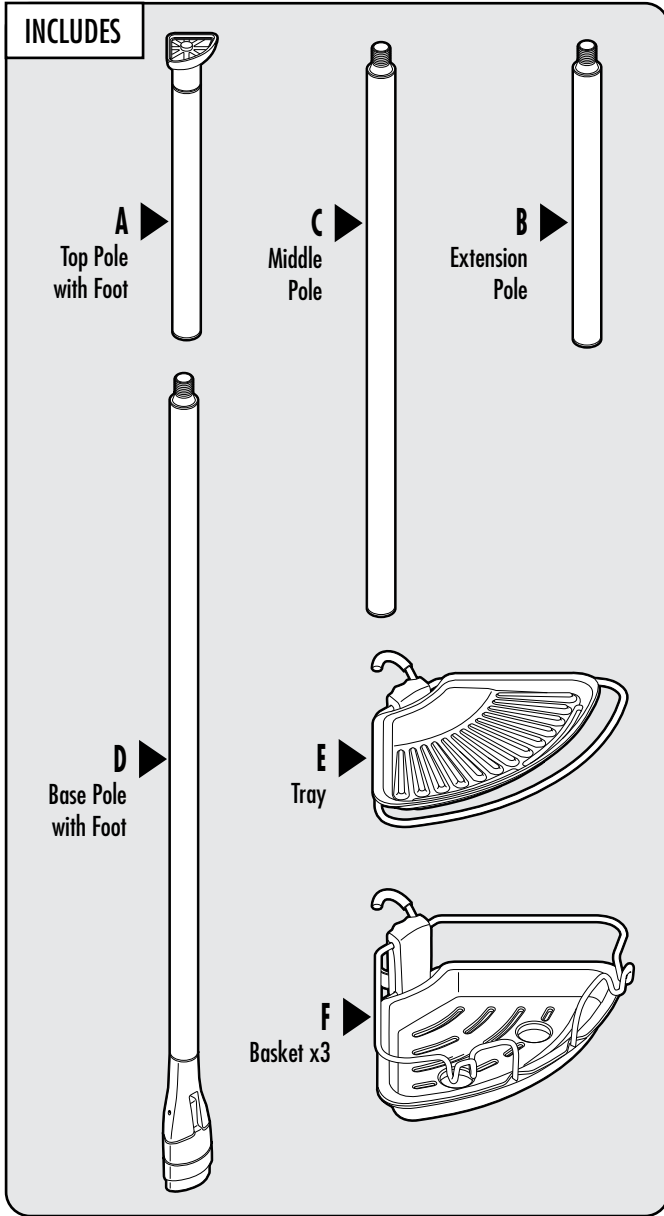




GOOD GRIPS®

Lift & Lock™ Pole Caddy



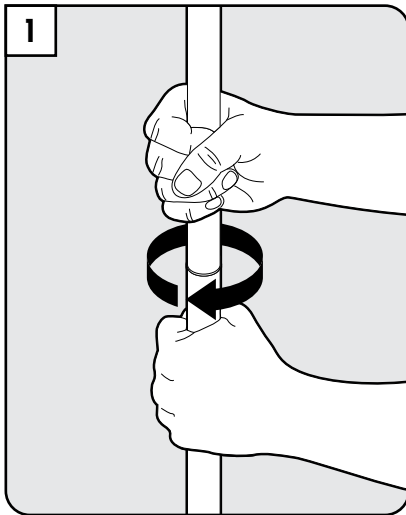
Determine location for caddy and measure the height of location from base to ceiling.

- For heights 6 ft and under, use Base Pole (D) and Top Pole (A)
- For heights of 6-8 ft, use Base Pole (D), Middle Pole (C), and Top Pole (A)
- For heights of 8-9 ft, use all Poles

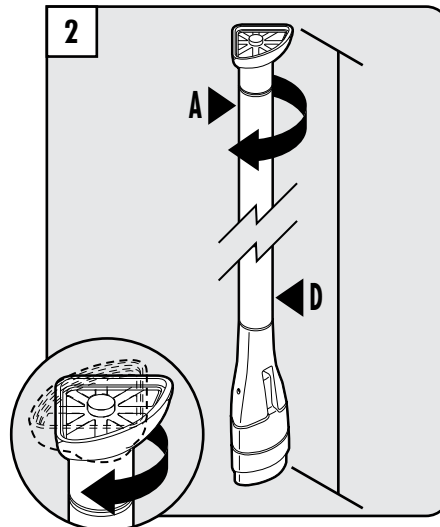
⚠ WARNING

Improper installation or failure to follow these instructions could result in injuries and/or property damage.

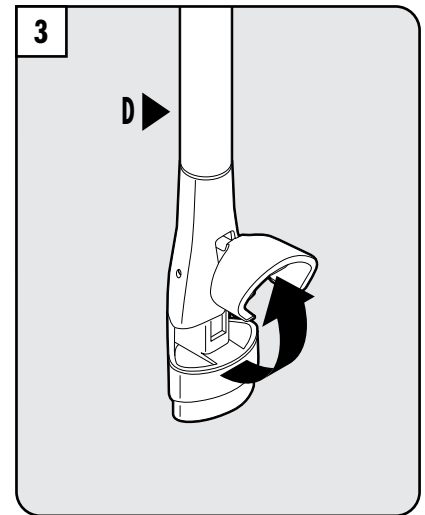
INSTALLATION INSTRUCTIONS



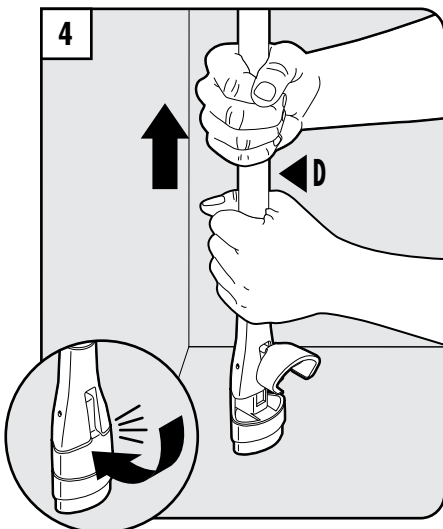
Determine which poles are needed using Site Preparation. Twist necessary poles together ensuring that Base Pole with foot (D) and Top Pole with foot (A) are in the appropriate positions.



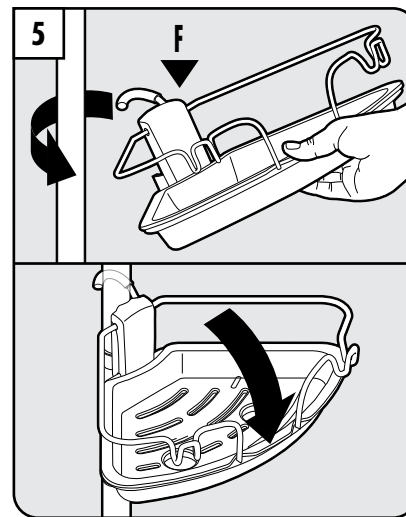
Rotate foot on Top Pole (A) until it aligns with foot on Base Pole (D).



Place in desired location. Unlock foot on Base Pole (D) by pulling up on foot lever.

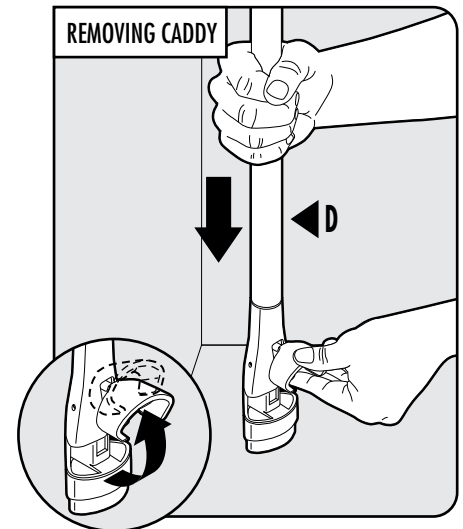


Hold at base and pull up until Top Pole (A) touches the ceiling in desired location. Lock foot on Base Pole (D) by pushing lever down until you feel a click. Ensure pole is secure.



To attach baskets (F) and tray (E), hook around pole and snap down to lock. Remove baskets for easy cleaning by pulling up to unlock from pole.

Note: Baskets and tray cannot be attached to thinner section of base pole



Remove Baskets (F) and Tray (E). While holding Base Pole (D), lift lever on foot to unlock. Hold lever above 90 degrees and pull down to retract poles.